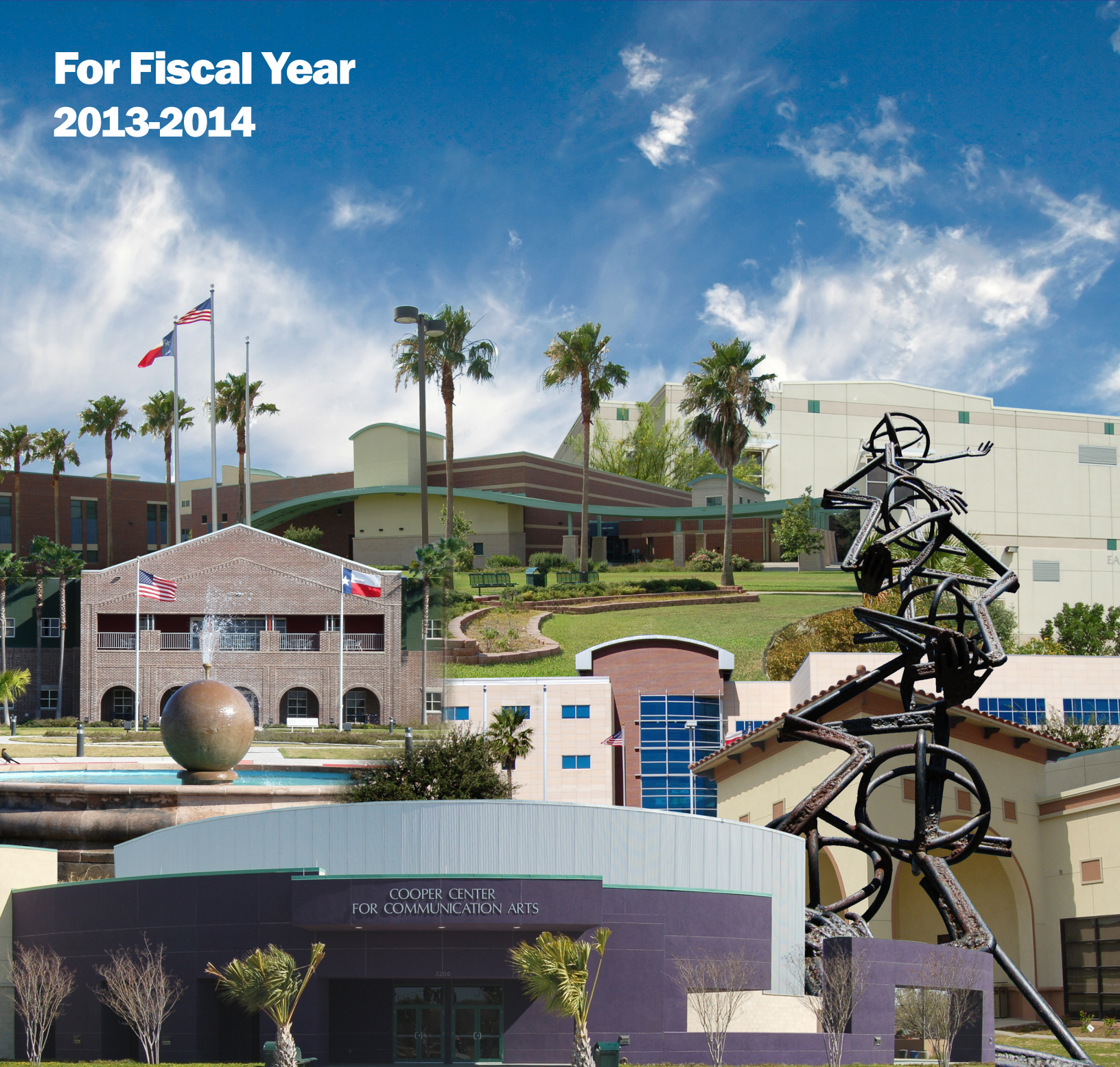


BUDGET

**For Fiscal Year
2013-2014**



South Texas College
Budget
For the Fiscal Year Ending August 31, 2014

Board of Trustees

ROSE BENAVIDEZ
CHAIR



President of Starr County Industrial Foundation
District 1
Representing Starr County
First Term: Nov. 2009 – May 2012
Second Term: May 2012 – May 2018
Serves as a member of the Facilities Committee

ROY DE LEON
VICE CHAIR



Branch Retail Executive of Compass Bank – Mercedes
District 7
Representing North East Hidalgo County, North Weslaco, Edcouch-Elsa, La Villa, North Mercedes, Northeast Alamo, Northeast Edinburg and Hargill
(Appointed 1997 - 1998)
First Term: May 1998 – May 2002
Second Term: May 2002 – May 2008
Third Term: May 2008 – May 2014
Serves as Chair of the Finance & Human Resources Committee
Formerly served as Chair of the Board and as a member of the Facilities Committee

GRACIELA FARIAS
SECRETARY



Self-Employed Educational Consultant
Retired from McAllen Independent School District
District 2
Representing La Joya, Western Mission, Palmview, Sullivan City, Penitas and Western Alton
First Term: May 2012 – May 2018

South Texas College
Budget
For the Fiscal Year Ending August 31, 2014

Board of Trustees

PAUL R. RODRIGUEZ
MEMBER



CEO of Valley Land Title Co.
District 3
Representing South McAllen, Southwest Pharr, Hidalgo, Sharyland,
Southeast Mission and Granjeno
First Term: August 2012 – May 2016

GARY GURWITZ
MEMBER



Managing Partner, Atlas, Hall & Rodriguez, L.L.P., McAllen
District 4
Representing North McAllen, Northwest Pharr, Palmhurst, Northeast Mission
and Southwest Edinburg (Appointed 1993 - 1998)
First Term: May 1998 – May 2004
Second Term: May 2004 – May 2010
Third Term: May 2010 – May 2016
Serves as Chair of the Facilities Committee and as a member of the Finance &
Human Resources Committee and the Education and Workforce Innovation
Committee
Formerly served as Chair, Vice Chair, and Secretary of the Board

South Texas College
Budget
For the Fiscal Year Ending August 31, 2014

Board of Trustees

DR. ALEJO SALINAS, JR.
MEMBER



Clinical Lecturer, University of Texas-Pan American
Retired Superintendent/Superintendent Emeritus, Hidalgo ISD
District 5
Representing North West Hidalgo County, Edinburg, North San Juan and
Northeast Pharr
First Term: May 1996 – May 2002
Second Term: May 2002 – May 2008
Third Term: May 2008 – May 2014
Serves as a member of the Education and Workforce Innovation Committee
and the Finance & Human Resources Committee
Formerly served as a member of the Facilities Committee

JESSE VILLARREAL
MEMBER



Parental Involvement Specialist, Weslaco ISD
District 6
Representing Donna, South Alamo, South San Juan, South East Pharr, South
Weslaco and Progreso
First Term: May 2000 – May 2006
Second Term: May 2006 – May 2012
Third Term: May 2012 – May 2018
Serves as a member of the Facilities Committee
Formerly served as Secretary and Vice Chair of the Board

South Texas College
Budget
For The Fiscal Year Ending August 31, 2014

Executive Staff

NAME	POSITION
Dr. Shirley A. Reed, MBA, Ed. D.	President
Vacant	Vice President for Academic Affairs
Wanda F. Garza	Interim, Vice President for Student Affairs and Enrollment Management
Jose Cruz, Jr.	Vice President for Information Services and Planning
Maria G. Elizondo	Vice President for Finance and Administrative Services
Carlos Margo	Interim, Executive Officer for the North American Advanced Manufacturing Research & Education Initiative

The Vision, Purpose, Core Values, Guiding Principles, and Strategic Directions Constitute the **Comprehensive Mission** for South Texas College

VISION A better quality of life for our communities.

PURPOSE South Texas College is a world-class comprehensive institution of higher learning providing premier educational and workforce programs and services in response to the needs of the region.

CORE VALUES

- Student Success
- Learning
- Excellence
- Integrity
- Community
- Opportunity

GUIDING PRINCIPLES

- Be a premier learning-centered higher education institution where student and community success are paramount;
- Serve as the cornerstone for the economic vitality of South Texas;
- Foster an environment for the students and community to achieve a better quality of life;
- Nurture a culture where collaboration is valued and achievement is recognized.

STRATEGIC DIRECTIONS

- South Texas College commits to student learning as the foundation of student success through excellence in teaching and service, faculty and staff empowerment, professional development, and accountability.
- South Texas College proudly provides opportunities to all students with high expectations for their success.
- South Texas College leads the transformation of the region to a “college-going” culture whereby attending and completing higher education is expected for all.
- South Texas College serves as the catalyst for regional economic prosperity and social mobility.
- South Texas College models professionalism through integrity, mutual respect, civility, trust, and collaboration.
- South Texas College champions a culture of excellence based on evidence.

Approved by the Board of Trustees, September 13, 2007.





South Texas College Fact Sheet 2013-2014

Locations

Pecan Campus
McAllen, TX

Mid-Valley Campus
Weslaco, TX

Starr County Campus
Rio Grande City, TX

Technology Campus
McAllen, TX

**Dr. Ramiro R. Casso
Nursing and Allied
Health Campus**
McAllen, TX

eSTC Virtual Campus

Executive Staff

Dr. Shirley A. Reed
President

Vacant
VP, Academic Affairs

Wanda F. Garza
*Interim VP, Student
Affairs and Enrollment
Management*

Jose Cruz, Jr.
*VP, Information
Services and Planning*

Mary G. Elizondo
*VP, Finance and
Administrative Services*

Carlos L. Margo
*Interim Executive
Director for NAAMREI*

Board of Trustees

Rose Benavidez
Chair

Roy De Leon
Vice Chair

Graciela Farias
Secretary

Paul R. Rodriguez
Member

Gary Gurwitz
Member

Dr. Alejo Salinas, Jr.
Member

Jesse Villarreal
Member

About South Texas College

Founded in 1993, South Texas College is accredited by the Commission on Colleges of the Southern Association of Colleges and Schools to award baccalaureate and associate degrees. More than 31,000 students attend STC, and a faculty and staff of more than 1,600 serve STC's five state-of-the-art campuses, three teaching centers and one virtual campus.

Associate Degrees and Certificates

The college offers more than 112 degree and certificate program options, including associate degrees in a variety of art, science, technology and allied health fields of study. The college also offers 20 online associate degrees options through the eSTC Virtual Campus.

Bachelor of Applied Technology

STC offers a Bachelor of Applied Technology (BAT) degree in Technology Management, as well as a Bachelor of Applied Technology in Computer and Information Technologies. The college is the only community college in Texas accredited to offer two bachelor's degrees.

Dual Enrollment Opportunities

STC has instituted a variety of dual enrollment programs, including early college high schools, drop-out recovery programs and other unique initiatives with high schools throughout Hidalgo and Starr counties. The programs allow eligible students to take college courses while attending high school. Combined, more than 10,000 students are currently enrolled in these programs. Since 2003, the college has provided tuition-free dual enrollment to over 67,000 high school students, saving families over \$70 million in tuition.

Continuing and Professional Education

The program provides opportunities for lifelong learners who want to upgrade their skills, change careers, renew licenses and certifications, or seek personal enrichment. There is a wide variety of course offerings including online classes. Additionally the division also offers customized training to area businesses, industries and the community. Training programs are tailored to a client's specific needs in terms of content, schedule and location.

NAAMREI

The college is the fiscal agent and home of the executive offices for the North American Advanced Manufacturing Research and Education Initiative. STC serves as the Regional Institute for Advanced Manufacturing linked to all the community and technical colleges in the region. The college has taken the lead in helping train the workers to fuel a regional manufacturing economy and to support innovations in rapid response manufacturing.

Articulation Agreements

For those students who wish to continue their education beyond an associate's degree, STC has more than 60 articulation agreements in place with colleges across the country.

Vital Statistics

- o More than 70% of student population are the first in family to attend college
- o More than 95% of students are Hispanic
- o More than 88% of students (not including dual enrollment students) take advantage of some form of financial aid
- o Class size averages 25 students per faculty member

In accordance with the Americans with Disabilities Act of 1990, Title IX of the Education Amendment of 1972, and Section 504 of the Vocational Rehabilitation Act of 1973, STC provides accommodations as required by law to afford equal educational opportunities to all people.

For questions about the accreditation of South Texas College contact the Commission on Colleges at (404) 679-4500.

SOUTH TEXAS COLLEGE
PROGRAMS OF STUDY
2013-2014

CHANGING LIVES, CHANGING COMMUNITIES

For the 2013-2014 academic year STC has 111 degrees and certificates available to its students: 3 Baccalaureate degrees, one Associate of Arts Degree in 18 fields of study, one Associate of Arts in Teaching in 3 fields of study, one Associate of Science Degree in 8 fields of study, 28 Associate of Applied Science Degrees, and 51 Certificates.

BACCALAUREATE DEGREES

Bachelor of Applied Technology in:

- Computer and Information Technologies
- Medical and Health Services Management
- Technology Management

BUSINESS & TECHNOLOGY

ASSOCIATE OF ARTS DEGREE

Field of Study

- Business Administration-Transfer Plan

ASSOCIATE OF APPLIED SCIENCE DEGREES

- Automotive Technology
 - Specialization:
 - GM-ASEP
- Business Administration
 - Specializations:
 - Accounting
 - Banking
 - Import/Export/Logistics
 - Management
 - Marketing
- Business Computer Systems
 - Specializations:
 - Computer Specialist
 - Networking Specialist
- Computer Aided Drafting and Design Technology
 - Specializations:
 - Architectural Drafting
 - Civil Drafting
 - Design and Technical Graphics
 - Geographic Information Systems
- Construction Supervision
- Culinary Arts
- Diesel Technology
- Electrician Technology
- Electronic and Computer Maintenance Technology
 - Specializations:
 - Computer Maintenance Technology
 - Computer Support Specialist
- Fire Science Technology
- Heating, Ventilation, Air Conditioning and Refrigeration Technology
- Human Resource Specialist
- Law Enforcement
- Legal Office Management
- Office Management
- Paralegal
- Precision Manufacturing Technology

CERTIFICATES

- Accounting Clerk
- Architectural Drafting
- Automotive Technology
- Banking
- Basic Firefighter
- Basic Peace Officer
- Civil Drafting
- Combination Welding
- Commercial Baking
- Commercial Cooking
- Computer and Information Technologies Specialist
- Computer and Internet Specialist
- Computer and Network Specialist
- Computer Applications Specialist
- Computer Maintenance Specialist
- Computer Support Specialist
- Construction Supervision Assistant
- Design and Technical Graphics
- Diesel Technology
- Electrician Assistant
- Ford Youth and Adult Training Program
- Geographic Information Systems
- Heating, Ventilation, Air Conditioning and Refrigeration Technology
- Human Resource Assistant
- Import/Export
- Information Security Specialist
- Legal Office Specialist
- Logistics
- Management
- Marketing
- Mechatronics
- Multimedia Specialist
- Office Specialist
- Plumber Assistant
- Precision Manufacturing Technology
- Structural Welding
- Telecommunication Technology Specialist

LIBERAL ARTS & SOCIAL SCIENCES

ASSOCIATE OF ARTS DEGREE

Fields of Study

- Anthropology
- Communication
- Criminal Justice
- Drama
- English
- Fine Arts
- Graphic Arts
- History
- Interdisciplinary Studies
- Kinesiology
- Language and Cultural Studies
- Mexican-American Studies
- Philosophy
- Political Science
- Psychology
- Social Work
- Sociology

ASSOCIATE OF ARTS IN TEACHING

Fields of Study

- EC-6 Generalist
- 4-8 Generalist
- Grades 8-12

ASSOCIATE OF APPLIED SCIENCE DEGREES

Fields of Study

- American Sign Language and Interpreter Studies
 - Specializations:
 - Deaf Support Specialist
 - Sign Language Interpreter
- Child Development

CERTIFICATES

- Administration of Early Childhood Programs
- Child Development
 - Specializations:
 - Infant and Toddler
 - Pre-School
- Trilingual Interpreter (Enhanced Skills Certificate)

MATH & SCIENCE

ASSOCIATE OF SCIENCE DEGREE

Fields of Study

- Biology
- Chemistry
- Computer Information Systems
- Computer Science
- Engineering
- Mathematics
- Physics
- Pre-Pharmacy

NURSING & ALLIED HEALTH

ASSOCIATE OF APPLIED SCIENCE DEGREES

- Associate Degree Nursing
 - LVN/ADN Transition
 - Paramedic to RN
- Emergency Medical Technology-Paramedic
- Health Information Technology
- Medical Assistant Technology
- Occupational Therapy Assistant
- Pharmacy Technology
- Physical Therapist Assistant
- Radiologic Technology
- Respiratory Therapy

CERTIFICATES

- Electronic Health Record Specialist
- Emergency Medical Technology-Basic
- Emergency Medical Technology-Intermediate
- Emergency Medical Technology-Paramedic**
- Medical Assistant Technology
- Medical Coding Specialist
- Medical Information/Transcription Specialist
- Medical Office Specialist
- Patient Care Assistant
- Pharmacy Technology
- Vocational Nursing

** This is a two-year certificate.

South Texas College

Summary of Fall Semester Headcount, Unduplicated Annual Headcount and Annual Full Time Equivalent (FTE)

Academic Year	Fall Semester Headcount	Unduplicated Annual Headcount	Annual FTE
1993 - 94	1,055	2,719	1,318
1994 - 95	2,227	4,720	2,221
1995 - 96	3,254	6,893	3,087
1996 - 97	5,416	9,756	4,696
1997 - 98	6,849	11,861	5,737
1998 - 99	9,598	14,391	7,572
1999 - 00	10,364	15,214	7,901
2000 - 01	11,183	16,793	8,343
2001 - 02	12,443	18,357	9,275
2002 - 03	13,691	20,447	10,173
2003 - 04	15,228	21,927	10,529
2004 - 05	17,035	23,847	11,384
2005 - 06	16,233	23,594	11,147
2006 - 07	18,460	25,423	11,675
2007 - 08	19,808	27,940	12,705
2008 - 09	21,666	30,796	14,162
2009 - 10	26,368	36,211	17,918
2010 - 11	28,006	36,871	18,710
2011 - 12	29,513	36,932	18,748
2012 - 13	29,812	38,167*	19,104*
2013 - 14*	31,846		

* Projected

South Texas College
Current & Plant Funds
Summary of Revenues and Transfers and Expenditures,
Transfers and Contingencies by Fund

Budget for Fiscal Year 2013 - 2014

Fund	Revenues and Transfers*	Expenditures, Transfers and Contingencies
Unrestricted Fund	\$ 141,233,035	\$ 141,233,035
Auxiliary Fund	\$ 2,088,023	\$ 2,088,023
Restricted Fund	\$ 75,659,845	\$ 75,659,845
Plant Fund - Unexpended - Construction	\$ 9,001,802	\$ 9,001,802
Plant Fund - Renewals & Replacements	\$ 9,335,771	\$ 9,335,771
Plant Fund - Retirement of Indebtedness	\$ 12,600,338	\$ 12,600,338

* Amounts may include Fund Balance (Carryover).



This page intentionally left blank.

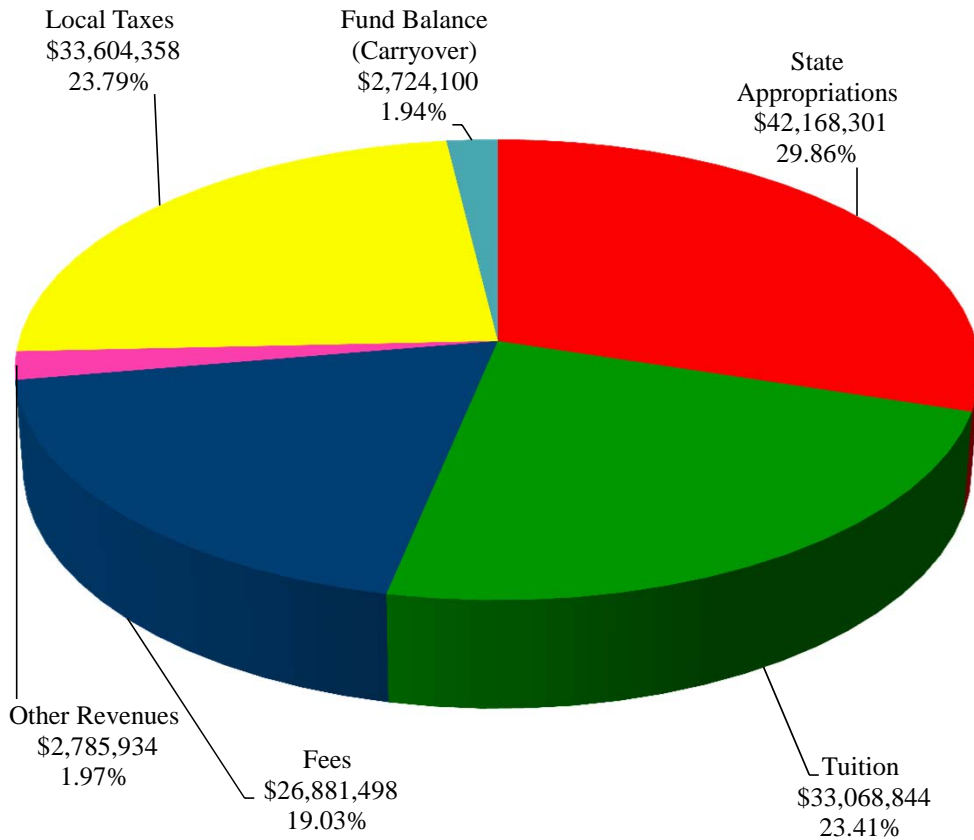


This page intentionally left blank.

South Texas College Unrestricted Fund Revenues by Source

Budget for Fiscal Year 2013 - 2014

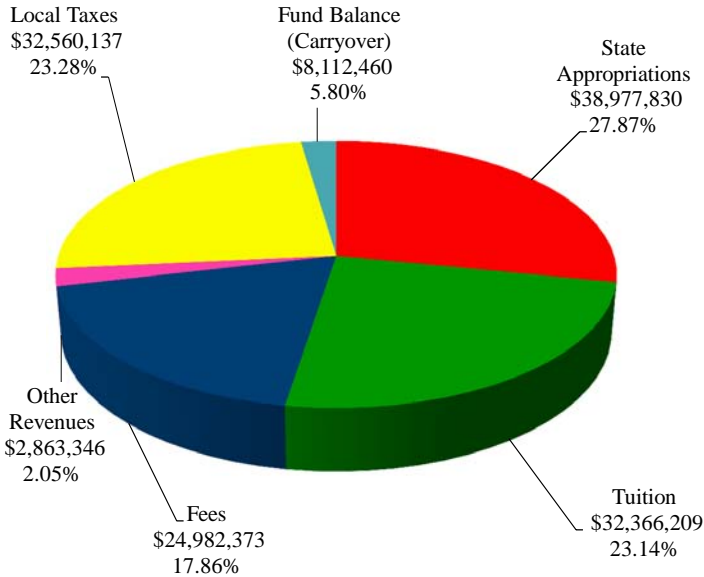
Source of Revenues	FY '14 Budget	Percentage
State Appropriations	\$ 42,168,301	29.86%
Tuition	33,068,844	23.41%
Fees	26,881,498	19.03%
Other Revenues	2,785,934	1.97%
Local Taxes	33,604,358	23.79%
Fund Balance (Carryover)	2,724,100	1.94%
Total Revenues	\$ 141,233,035	100.00%



South Texas College Unrestricted Fund Revenues by Source

Comparison of Previous Fiscal Year with Fiscal Year Ending August 31, 2014

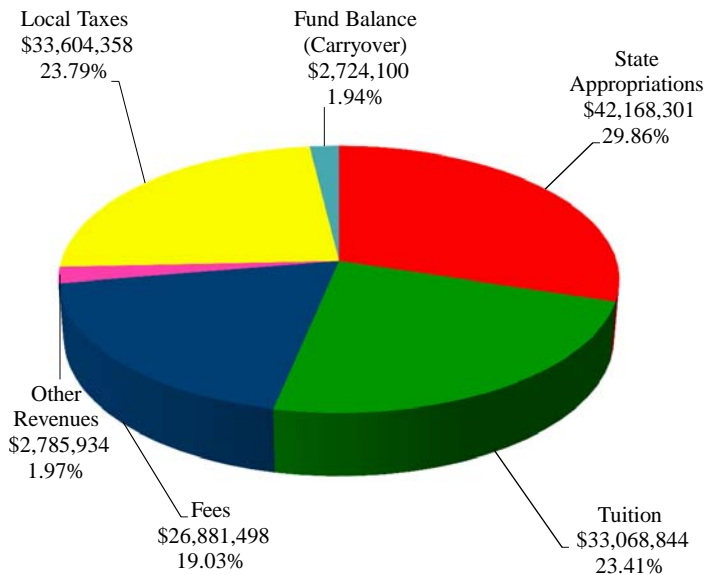
Fiscal Year 2013



Source of Revenues	FY '13 Budget (As Amended)	Percentage
State Appropriations	\$ 38,977,830	27.87%
Tuition	32,366,209	23.14%
Fees	24,982,373	17.86%
Other Revenues	2,863,346	2.05%
Local Taxes	32,560,137	23.28%
Fund Balance (Carryover)	8,112,460	5.80%
Total Revenues	\$ 139,862,355	100.00%

Fiscal Year 2014

Source of Revenues	FY '14 Budget	Percentage
State Appropriations	\$ 42,168,301	29.86%
Tuition	33,068,844	23.41%
Fees	26,881,498	19.03%
Other Revenues	2,785,934	1.97%
Local Taxes	33,604,358	23.79%
Fund Balance (Carryover)	2,724,100	1.94%
Total Revenues	\$ 141,233,035	100.00%



South Texas College
Unrestricted Fund
Summary of Revenues - Budget and Actual

Comparison of Previous Fiscal Years with Fiscal Year Ending August 31, 2014

Revenue Source	FY '12 Budget (As Amended)	FY '12 Actual	FY '13 Budget (As Amended)	FY '13 Estimated*	FY '14 Budget
State Appropriations	\$ 37,017,673	\$ 37,017,673	\$ 38,977,830	\$ 38,977,830	\$ 42,168,301
Tuition	32,870,479	30,947,591	32,366,209	32,097,438	33,068,844
Fees	25,799,226	26,125,131	24,982,373	25,065,384	26,881,498
Other Revenues	2,200,052	2,924,921	2,863,346	2,863,346	2,785,934
Local Taxes	32,026,816	33,244,142	32,560,137	33,410,182	33,604,358
Fund Balance (Carryover)	8,215,363	8,215,363	8,112,460	8,112,460	2,724,100
Total Unrestricted Fund Revenues	\$ 138,129,609	\$ 138,474,821	\$ 139,862,355	\$ 140,526,640	\$ 141,233,035

* Amounts are estimated. Actual amounts will be available after fiscal year end and completion of audit.

The Unrestricted Fund includes those economic resources of the college which are expendable for the purpose of performing the primary missions of the institution-instruction, research, and public service - and which are not restricted by external sources or designated by the governing board of other than operating expenditures.

Note:
State Appropriations Revenues include state on-behalf benefits which are budgeted in the Unrestricted Fund and are subsequently transferred to the Restricted Fund along with related expenditures for Annual Financial Report purposes.

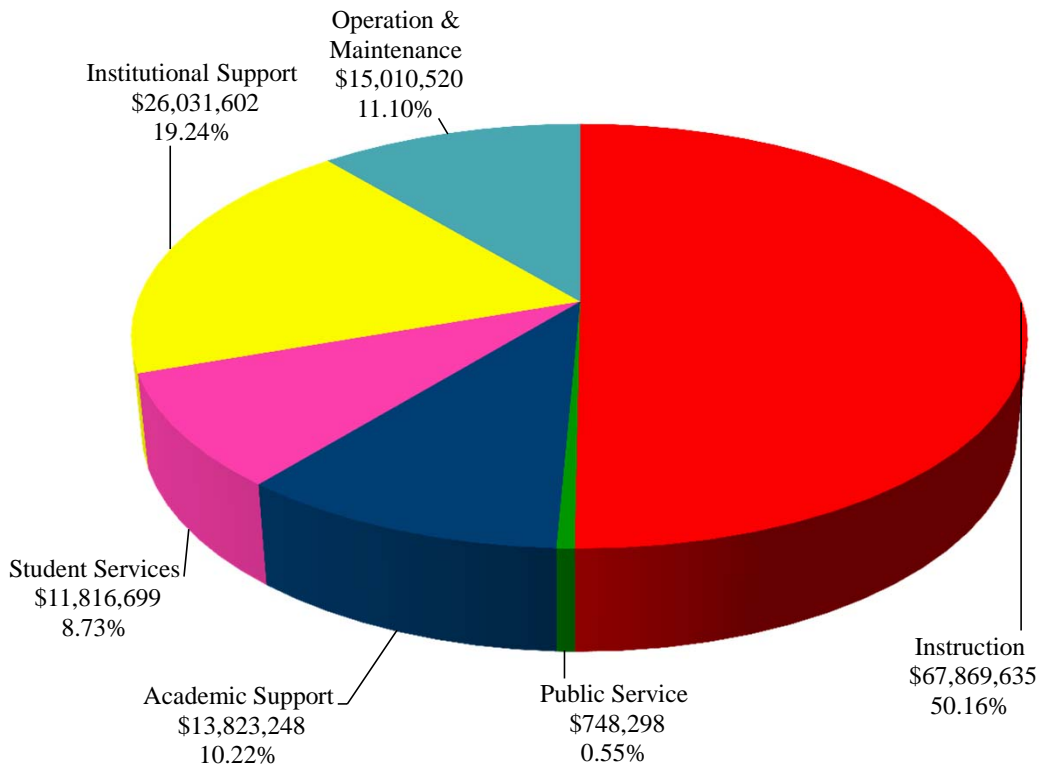


This page intentionally left blank.

**South Texas College
Unrestricted Fund
Expenditures by Function
(Without Transfers and Contingencies)**

Budget for Fiscal Year 2013 - 2014

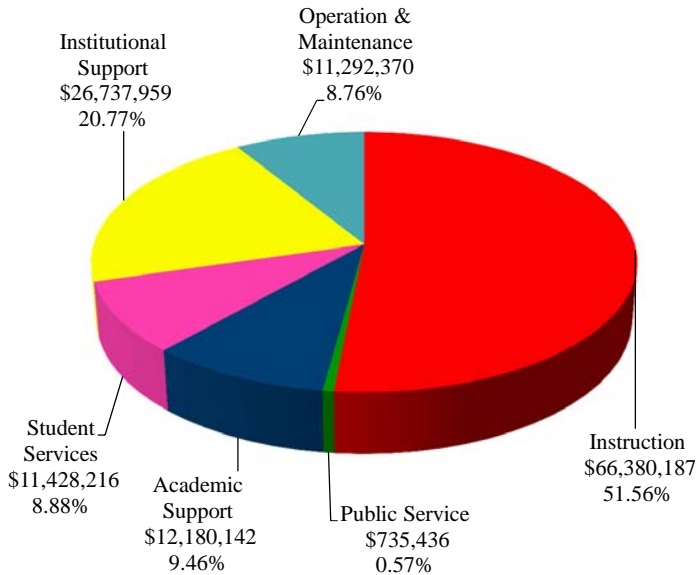
Function	FY '14 Budget	Percentage
Instruction	\$ 67,869,635	50.16%
Public Service	748,298	0.55%
Academic Support	13,823,248	10.22%
Student Services	11,816,699	8.73%
Institutional Support	26,031,602	19.24%
Operation & Maintenance	15,010,520	11.10%
Total Expenditures	\$ 135,300,002	100.00%



South Texas College Unrestricted Fund Expenditures by Function (Without Transfers and Contingencies)

Comparison of Previous Fiscal Year with Fiscal Year Ending August 31, 2014

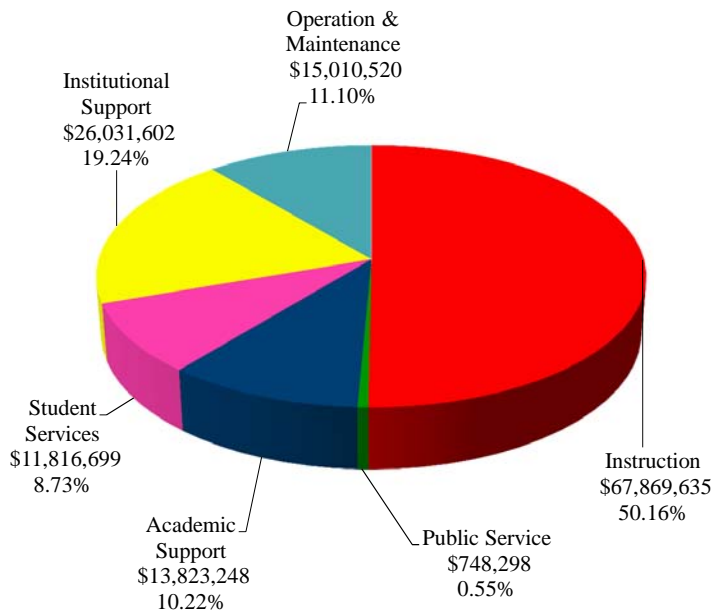
Fiscal Year 2013



Function	FY '13 Budget (As Amended)	Percentage
Instruction	\$ 66,380,187	51.56%
Public Service	735,436	0.57%
Academic Support	12,180,142	9.46%
Student Services	11,428,216	8.88%
Institutional Support	26,737,959	20.77%
Operation & Maintenance	11,292,370	8.76%
Total Expenditures	\$ 128,754,310	100.00%

Fiscal Year 2014

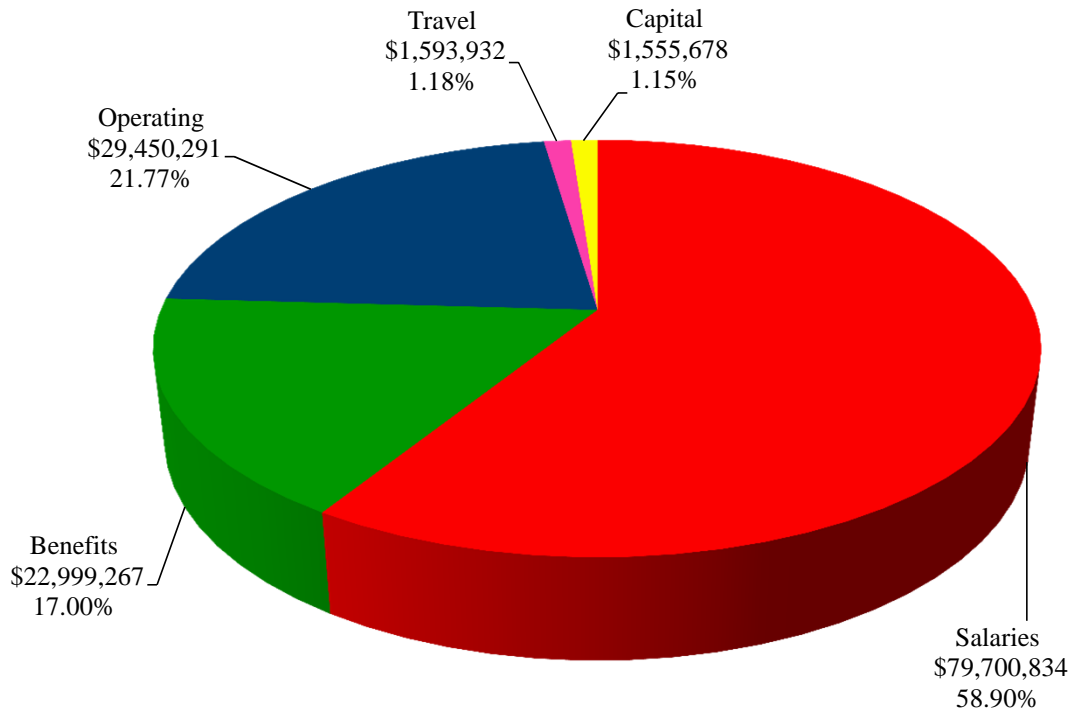
Function	FY '14 Budget	Percentage
Instruction	\$ 67,869,635	50.16%
Public Service	748,298	0.55%
Academic Support	13,823,248	10.22%
Student Services	11,816,699	8.73%
Institutional Support	26,031,602	19.24%
Operation & Maintenance	15,010,520	11.10%
Total Expenditures	\$ 135,300,002	100.00%



South Texas College
Unrestricted Fund
Expenditures by Classification
(Without Transfers and Contingencies)

Budget for Fiscal Year 2013 - 2014

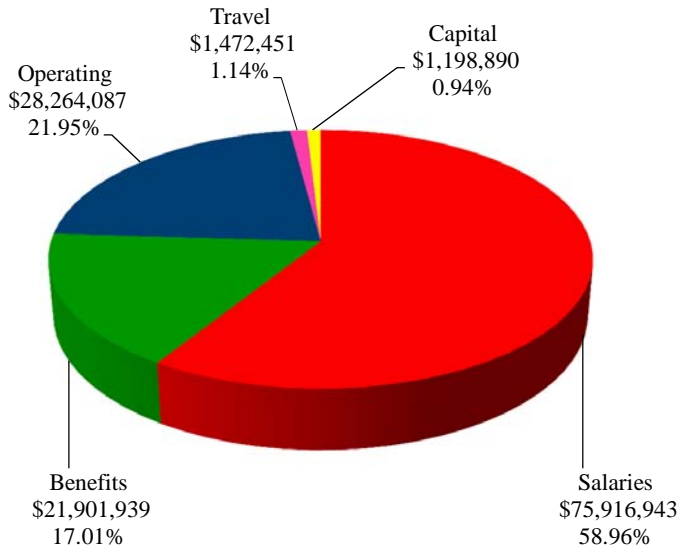
Classification	FY '14 Budget	Percentage
Salaries	\$ 79,700,834	58.90%
Benefits	22,999,267	17.00%
Operating	29,450,291	21.77%
Travel	1,593,932	1.18%
Capital	1,555,678	1.15%
Total Expenditures	\$ 135,300,002	100.00%



South Texas College Unrestricted Fund Expenditures by Classification (Without Transfers and Contingencies)

Comparison of Previous Fiscal Year with Fiscal Year Ending August 31, 2014

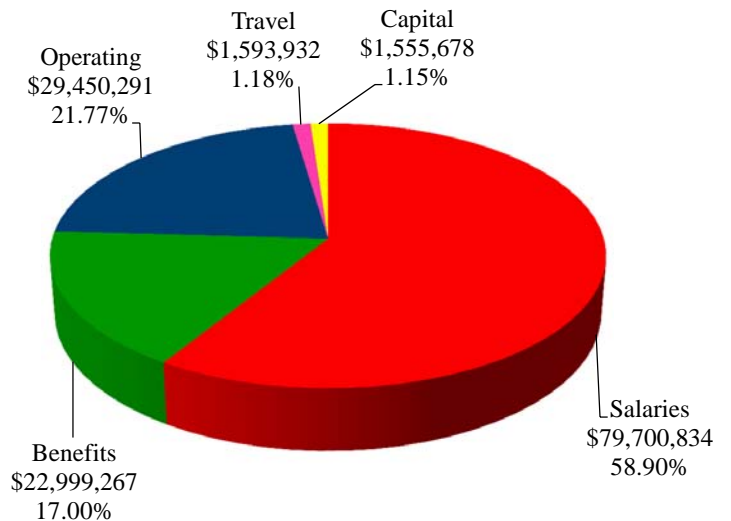
Fiscal Year 2013



Classification	FY '13 Budget (As Amended)	Percentage
Salaries	\$ 75,916,943	58.96%
Benefits	21,901,939	17.01%
Operating	28,264,087	21.95%
Travel	1,472,451	1.14%
Capital	1,198,890	0.94%
Total Expenditures	\$ 128,754,310	100.00%

Fiscal Year 2014

Classification	FY '14 Budget	Percentage
Salaries	\$ 79,700,834	58.90%
Benefits	22,999,267	17.00%
Operating	29,450,291	21.77%
Travel	1,593,932	1.18%
Capital	1,555,678	1.15%
Total Expenditures	\$ 135,300,002	100.00%



South Texas College
Unrestricted Fund
Summary of Expenditures by Function and Classification
Budget for Fiscal Year 2013 - 2014

Function / Classification	Salaries	Percent of Total	Benefits	Percent of Total	Operating	Percent of Total
Instruction	\$ 46,818,438	58.74%	\$ 13,524,304	58.80%	\$ 6,442,102	21.87%
Public Service	393,562	0.49%	65,253	0.28%	262,553	0.89%
Academic Support	8,230,306	10.33%	2,232,039	9.70%	2,727,510	9.26%
Student Services	7,675,613	9.63%	2,282,395	9.92%	1,510,801	5.13%
Institutional Support	11,414,125	14.32%	3,438,222	14.95%	10,345,624	35.13%
Operation & Maintenance - Plant	5,168,790	6.49%	1,457,054	6.35%	8,161,701	27.72%
Total - Without Transfers & Contingencies	79,700,834	100.00%	22,999,267	100.00%	29,450,291	100.00%
Percent of Total Expenditures Without Transfers & Contingencies	58.90%		17.00%		21.77%	
Transfers and Contingencies						
Transfer-Construction Fund	-		-		2,500,000	
Transfer-MTR Bond Series 2007	-		-		392,800	
Transfer-NAAMREI/IAM	-		-		840,233	
Contingency	-		-		2,200,000	
Total Transfers and Contingencies	-		-		5,933,033	
Total Unrestricted Budget Expenditures/Transfers/Contingencies	\$ 79,700,834		\$ 22,999,267		\$ 35,383,324	
Percent of Total Expenditures With Transfers & Contingencies	56.44%		16.28%		25.05%	

South Texas College
Unrestricted Fund
Summary of Expenditures by Function and Classification

Budget for Fiscal Year 2013 - 2014

(Continued)

Travel	Percent of Total	Capital	Percent of Total	Total	Percent of Total Budget W/O Trans/Cont	Percent of Total Budget With Trans/Cont
\$ 750,408	47.08%	\$ 334,383	21.49%	\$ 67,869,635	50.16%	48.06%
26,930	1.69%	-	0.00%	748,298	0.55%	0.53%
273,481	17.16%	359,912	23.14%	13,823,248	10.22%	9.79%
198,548	12.46%	149,342	9.60%	11,816,699	8.73%	8.37%
283,590	17.79%	550,041	35.36%	26,031,602	19.24%	18.43%
60,975	3.82%	162,000	10.41%	15,010,520	11.10%	10.63%
1,593,932	100.00%	1,555,678	100.00%	135,300,002	100.00%	95.81%
1.18%		1.15%		100.00%		
-		-		2,500,000		
-		-		392,800		
-		-		840,233		
-		-		2,200,000		
-		-		5,933,033		4.19%
\$ 1,593,932		\$ 1,555,678		\$ 141,233,035		100.00%
1.13%		1.10%		100.00%		



This page intentionally left blank.

South Texas College
Unrestricted Fund
Summary of Capital Expenditures by Function and Organization

Budget for Fiscal Year 2014

Organization Name	Organization Code	Total
Instruction		
Biology	221301	\$ 37,383
Engineering	221302	30,000
Physics	221303	47,000
Associate Degree Nursing	224005	75,000
Vocational Nursing	224018	20,000
Respiratory Therapy	224025	20,000
Distance Education Technology	520001	105,000
Total Instruction		334,383
Academic Support		
Library Acquisition	530002	197,000
BAT and Support Materials	530008	34,912
Inst Tech Maint & Replacement	540008	28,000
Office of Strategic Initiatives	560001	100,000
Total Academic Support		359,912
Student Services		
Admissions & Records	320001	149,342
Total Student Services		149,342
Institutional Support		
Public Relations/Marketing	120000	5,000
Business Office	410013	50,151
Shuttle Buses	431010	76,890
Human Resources	460001	9,000
ITS Project Manager	510005	88,000
Document Imaging (DI)-I/S Admin	510010	40,000
Information Security	512001	28,000
Phones Central Office	520002	233,000
Information Technology	520004	20,000
Total Institutional Support		550,041
Operation & Maintenance		
Office of Safety and Security	450002	50,000
STC Police	450051	112,000
Total Operation & Maintenance		162,000
Total Capital Expenditures		\$ 1,555,678



This page intentionally left blank.

South Texas College
Auxiliary Fund
Summary of Revenues, Expenditures and Transfers - Budget and Actual
Comparison of Previous Fiscal Years with Fiscal Year Ending August 31, 2014

Fiscal Year	Revenues* / Expenditures / Transfers	Budget	Actual**
2011-2012	Revenues	\$ 2,248,515	\$ 1,874,974
	Expenditures and Transfers	\$ 2,248,515	\$ 1,418,145
2012-2013	Revenues	\$ 2,126,501	\$ 2,126,501
	Expenditures and Transfers	\$ 2,126,501	\$ 2,126,501
2013-2014	Revenues	\$ 2,088,023	
	Expenditures and Transfers	\$ 2,088,023	

* Revenues may include Fund Balance (Carryover)

** Projected for Fiscal Year 2013

The *Auxiliary Fund* accounts for transactions of self-supporting activities. The fund exists to provide goods or services to students, faculty, staff, other institutional departments, or incidentally to the general public. The assessed fee is directly related to, although not necessarily equal to, the cost of the goods or services. Examples include the College bookstore, food service, wellness center, child care center and general conferences.



This page intentionally left blank.

South Texas College
Restricted Fund
Summary of Revenues, Expenditures and Transfers - Budget and Actual
Comparison of Previous Fiscal Years with Fiscal Year Ending August 31, 2014

Fiscal Year	Revenues / Expenditures/Transfers	Budget	Actual*
2011-2012	Revenues and Transfers	\$ 74,910,030	\$ 76,270,317
	Expenditures and Transfers	\$ 74,910,030	\$ 76,902,705
2012-2013	Revenues and Transfers	\$ 79,115,684	\$ 79,115,684
	Expenditures and Transfers	\$ 79,115,684	\$ 79,115,684
2013-2014	Revenues and Transfers	\$ 75,659,845	
	Expenditures and Transfers	\$ 75,659,845	

* Projected for Fiscal Year 2013

The *Restricted Fund* accounts for operating funds that have been restricted for a specific purpose by external parties, grants, contracts, donors, or legislation.



This page intentionally left blank.

South Texas College
Plant Funds
Summary of Revenues, Expenditures and Transfers

Budget for Fiscal Year 2013 - 2014

Fund	Revenues and Transfers*	Expenditures and Transfers
Plant Fund - Unexpended - Construction Fund	\$ 9,001,802	\$ 9,001,802
Plant Fund - Renewals & Replacements Fund	\$ 9,335,771	\$ 9,335,771
Plant Fund - Retirement of Indebtedness Fund	\$ 12,600,338	\$ 12,600,338

*Amounts may include Fund Balance (Carryover).

The *Unexpended - Construction Fund* accounts for resources to be used for plant construction or acquisition.

The *Renewals and Replacements Fund* accounts for resources to be used for renewing and replacing facilities on existing College capital assets.

The *Retirement of Indebtedness Fund* accounts for funds held in reserve for paying principal and interest on debt, as well as related costs in accordance with bond indentures.



This page intentionally left blank.

**A RESOLUTION ADOPTING THE BUDGET OF
SOUTH TEXAS COLLEGE FOR THE FISCAL YEAR
BEGINNING SEPTEMBER 1, 2013 AND ENDING
AUGUST 31, 2014 IN ACCORDANCE WITH THE
PROVISIONS OF THE TEXAS EDUCATION CODE
AND ORDERING OTHER PROVISIONS RELATED TO
THE SUBJECT MATTER HEREOF.**

**BE IT ORDERED BY THE BOARD OF TRUSTEES OF SOUTH TEXAS
COLLEGE, THAT:**

SECTION I: The Budget Estimate of revenues for South Texas College District (the "College District") and the expenses of conducting the affairs thereof for the ensuing fiscal year beginning September 1, 2013, and ending August 31, 2014, as submitted by the President of the College, be, and the same is in all things, adopted and approved as the budget of all of the current revenues and expenses for the fiscal year beginning the 1st day of September, 2013, and ending the 31st day of August, 2014.

SECTION II: The amount of ad valorem taxes and revenue from other sources, as estimated by the President, is hereby appropriated out of the various Funds for the payment of operating expenses and capital outlay of the College District. A copy of the Budget Summary indicating such revenues and appropriating their expenditures is attached hereto and made a part hereof for all purposes as Exhibit "A" and shall remain on file in the Office of the President.

SECTION III: The sums indicated in Exhibit "A" are hereby appropriated in the Unrestricted Fund and College's Debt Service Fund out of the current year ad valorem taxes as collected for the purposes of maintenance and operation of the College District, as applicable, and applying the interest due on the general obligation bonds, redeeming the bonds as they mature, and creating sinking funds as required by such bonds.

SECTION IV: All Resolutions or parts of Resolutions in conflict herewith are hereby repealed.

SECTION V: This Resolution shall be and remain in full force and effect as of September 1, 2013.

SECTION VI: If any part, or parts, of this Resolution are found to be invalid or unconstitutional by a court having competent jurisdiction, then such invalidity or unconstitutionality shall not affect the remaining parts hereof and such remaining parts shall remain in full force and effect, and to the extent this Resolution is considered severable.

CONSIDERED, PASSED and APPROVED this 27 day of August, 2013 at a meeting of the Board of Trustees of South Texas College District at which a quorum was present and which was held in accordance with the Texas Government Code Chapter 551.

SIGNED this 27 day of August, 2013.

SOUTH TEXAS COLLEGE DISTRICT

By: 
Rose Benavidez, Chair

ATTEST:

By: 
Graciela Farias, Secretary



SOUTH TEXAS COLLEGE

www.southtexascollege.edu